

Company Profile

Project Management Professional (PMP) Services Ltd was established in 2006 with a mission:

“To become Australasia’s leading provider of Professional Project Management Services to all stakeholders in the production and utilities industries.”

The company was founded by Ian Vedder, a professional mechanical engineer and multi-discipline project manager with industry experience in the Power Generation, Oil & Gas, Dairy, Food and Beverage, Pulp and Paper, Industrial Refrigeration, Pharmaceutical and Water Treatment industries.

The company is currently providing engineering and project management support to several hundred million dollars worth of major power generation projects.

The company is unique in that all key personnel have multi-discipline project management experience as both consultants and contractors and most also have a design-build contracting background. This provides a multi-faceted and practical perspective on management of projects and enables the company to provide engineering and project management services to major contractors, large multi-discipline engineering consultancy’s, production and utility companies alike.

The company utilises a network of highly experienced independent consulting engineers and project managers and brings these individuals together along with its core staff into a dynamic team able to tackle most projects across a broad range of industries. The companies key personnel are predominantly process/ mechanical engineers and multidiscipline project managers. However, the company has established a working relationship with several complimentary small to medium size civil and electrical/automation consultancies and through these associations can offer a full range of design and project management services - refer to our Services section for details.

We offer a wide range of Project Management [Services](#) to production and utility industries including:

- Power Generation
- Oil & Gas
- Pulp & Paper
- Dairy
- Food & Beverage
- Process
- Industrial Refrigeration
- Water and Waste Water Treatment



Key Contacts

General Enquiries:

Contact: Ian Vedder (Managing Director)

Phone: +64 9 416 7045

Mobile: +64 21 2254316 or +61 406 608 817

E-mail: ian@pmpservices.co.nz

Key Personnel



Ian Vedder (BE (Mech) (Hons), MIPENZ, CPEng, IntPE, PMP)

Managing Director - Ian is a professional mechanical engineer and multi-discipline project manager with industry experience in the Power Generation, Oil & Gas, Dairy, Food and Beverage, Pulp and Paper, Industrial Refrigeration, Pharmaceutical and Water Treatment industries. He has multi-discipline project management experience as a consultant, a construction contractor and a design-build contractor, providing a broad and multi-faceted perspective on project management.

Ian has worked and consulted on projects in New Zealand, Australia, Papua New Guinea, Fiji, Vietnam, Philippines and Japan.

E-mail: ian@pmpservices.co.nz



Nelson Arriba (Bachelor of Science in Mechanical Engineering)

Project Manager/Commissioning Engineer - Nelson has 28 years professional experience in Oil & Gas and Power Generation.

Nelson has worked on major projects in New Zealand, Kingdom of Saudi Arabia, Qatar, Nigeria, Vietnam and the Philippines.

E-mail: nelson@pmpservices.co.nz



Tom King (BSc (Surveying), BE (1st Class Honours) (Civil),
Diploma in Business Administration, Member of NZGA)

Senior Construction Manager/ Project Manager – Tom has over 30 years of Civil Engineering, Project Management and Construction Management experience including 25 years experience specifically within the Power Generation industry. Tom's engineering and construction management experience ranges from geothermal well drilling to power plant construction. Tom has held several management and General Management roles throughout his career and has considerable expertise in business systems development.

Tom has worked on major projects in New Zealand, Africa and throughout the Asia Pacific region.

E-mail: tom@pmpservices.co.nz

Services

PMP Services Ltd offers a broad range of services to contractors, large multi-discipline Engineering Consultancies, Utility and Production companies, including:

Principal's Engineer

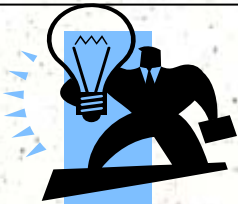
We provide experienced multi-discipline Project Managers to administer projects on behalf of end users of Engineering Services, such as Power Generators, Oil & Gas Companies, Manufacturers, Dairy Companies, Local Authorities, etc.

Our Project Managers have the technical know-how and contract management experience to ensure that our clients get the best value from design consultants and contractors. They also maintain the highest ethical standards to ensure that all parties are treated fairly and impartially creating value for all stakeholders.

For more information about this service:

Email: ian@pmpservices.co.nz

Feasibility Studies



Got some bright ideas to improve your production process? Let us use our technical knowledge and commercial skills to assist you in evaluating alternatives and developing your best ideas into viable projects.

For more information about this service:

Email: ian@pmpservices.co.nz

Engineering Procurement Construction Management (EPCM)

We provide specialist engineering and project management services to support or partner with contractors for design/build (EPC) contracts. Our key personnel's previous experience as design/build and/or construction contractors enables us to provide a full range of services to contractor's including estimate and tender preparation through to project management and plant commissioning.

We also offer a similar service to Principal's who wish to Engineer and procure for projects inhouse to ensure the best technical solution to meet their needs (on an engineer and management fee basis)

For more information about this service:

Email: ian@pmpservices.co.nz

Tender Document Preparation

Our key personnel's experience and knowledge of how both contractors and consultants think and work gives us a unique advantage in being able to prepare tender documents to make the tender process easy for all parties and provide the best results for our clients.

We prepare Request for Pre-qualification (RFP) and request for quotation (RFQ) documents for our Principal clients

We also prepare tender submissions on behalf of contractors.

For more information about this service:

Email: ian@pmpservices.co.nz



PROJECT MANAGEMENT PROFESSIONAL SERVICES LTD

The Practical Consultants

PO Box 180075, Royal Heights,
Auckland 0656,
New Zealand
Ph/Fax +64 9 4167045
Mob +64 21 225 4316
ian@pmpservices.co.nz
www.pmpservices.co.nz

Services

Conceptual & Process Design

We specialise in conceptual and process design for most process industries including:

- Power Generation - Thermal & Geothermal
- Oil & Gas
- Pulp & Paper
- Dairy
- Food & Beverage
- Industrial Refrigeration
- Water & Waste Water Treatment

For more information about this service:

Email: ian@pmpservices.co.nz

Mechanical Design

We provide general mechanical design services including:

- Pressure vessel design to PD5500, AS1210 & ASME VIII codes of practice
- Pressure pipe work to ASME B31.1 & B31.3 including Autopipe stress analysis
- Pipe and vessel support design
- Plant Layout
- General mechanical design

We can also offer a complete civil, mechanical and electrical design package in co-ordination with our network of design consultant partners.

For more information about this service:

Email: ian@pmpservices.co.nz

Tender Process Management

In addition to our RFQ preparation service we can also manage the entire tender process on behalf of our client's including:

- Budget estimates
- Economic analysis (see also feasibility studies)
- Candidate selection/ adverts for open tenders
- Preparation and distribution of documentation
- Pre-qualification evaluation
- Co-ordination of Notice to tenderers and tender clarifications
- Tender evaluation and recommendations

For more information about this service:

Email: ian@pmpservices.co.nz

Contract Drafting & Negotiation

We have considerable experience in drafting and negotiating contracts for Engineering works including terms and conditions of sale. We can draft practical and easy to use contracts to suit our client needs. These provide clarity in the demarcation of risk and responsibility between parties and comply with the latest legislation without unnecessarily complex legal jargon.

We also provide a contract review service to assist clients in risk analysis prior to signing up to contracts or submitting tenders.

For more information about this service:

Email: ian@pmpservices.co.nz

Services

Autocad Drafting Services



We provide autocad drafting services to compliment our process and mechanical design services. We can also provide Autocad drafting as a stand only service.

For more information about this service:

Email: ian@pmpservices.co.nz

Automation Solutions

We can provide complete automated design solutions for process plants from conceptual process design through to electrical and automation design and programming using most common automation platforms.

We have considerable experience in managing this type of work and can also project manage nominated automation subcontractor on behalf of our clients to provide an overall integrated design process.

For more information about this service:

Email: ian@pmpservices.co.nz

Business System Development & improvement

We have extensive experience in the development and improvement of business systems including QA procedures and manuals, project budgeting, cost tracking and reporting systems, databases, templates, forms, etc.

We can work with your key personnel to develop new systems to suit your specific business needs or audit and consult on possible improvements to your existing system. There are no off the shelf solutions for business systems. We work closely with our clients to develop the best solution for their specific needs.

For more information about this service:

Email: ian@pmpservices.co.nz

Project Management Staff Training & Mentoring

Our Managing Director has had considerable experience in training and mentoring engineers and project managers in New Zealand and overseas. We can tailor-make a training program to suit your staff development needs, including,

- MS Project training
- Project budgeting, cost tracking and reporting systems training
- Risk Management Training
- Mentoring of project managers whilst assisting with management of clients projects.

For more information about this service:

Email: ian@pmpservices.co.nz

Current Projects

PMP Services Ltd is currently providing engineering and project management support to several hundred million dollars worth of Major Power Generation Projects including the following:

Sumitomo Corp - Kawerau 90MW Dual Flash Geothermal Power Plant and Steam Separation System, 2007 to March 2011

Scope: EPC contract for the design, procurement, installation & commissioning of a 90MW Dual Flash Geothermal Power Plant and Steam Separation Plant including all civil, architectural, mechanical, electrical and automation works. This is the largest single shaft dual flash Geothermal Steam Turbine installation in the world. It is a significant component of a \$300M Geothermal Power development by Kawerau Geothermal Ltd (subsidiary of Mighty River Power). The Power Plant achieved commercial operation in August 2008, 6 weeks ahead of the contract schedule.

Role: PMP Services Ltd provided the local project management team on behalf of the EPC Contractor, Sumitomo Corporation of Japan. This included the following functions:

On shore Project Manager -

1. Provide contractual advise on the administration of the Main EPC Contract for site construction related issues.
2. Provide engineering support, procurement assistance and local knowledge of New Zealand regulations
3. Develop, finalise, implement and update all project management plans and systems.
4. Review and negotiate local procurement contracts and advise on NZ law.
5. Administer all local subcontracts on behalf of Sumitomo.
6. Manage on-shore Project schedule and co-ordinate between subcontractors.

Site Construction Manager -

1. Manage all project processes on site through construction phase.
2. Represent Sumitomo Corporation on site and manage and co-ordinate daily site matters throughout the project.
3. Participate in ensuring a proactive health and safety culture on the construction site, in conjunction with the client and subcontractors.

Erection Co-ordinator - Supervise all mechanical & electrical erection work and provide technical and management support during commissioning.

Steam Separation Plant Commissioning Engineer—Assist commissioning of the Steam Separation Plant including initial operation and trouble shooting, manage lock-out tag out system & reviewing operating and commissioning procedures.

Sumitomo Corporation - Nga Awa Purua 132MW Triple Flash Geothermal Power Plant and Steam Separation System, 2008 to Present

Scope: EPC contract for the design, procurement, installation & commissioning of a 132MW Triple Flash Geothermal Power Plant and Steam Separation Plant including all civil, architectural, mechanical, electrical and automation works. This is the largest single shaft triple flash Geothermal Steam Turbine installation in the world. It is a significant component of a \$450M Geothermal Power development by Mighty River Power.

Role: PMP Services Ltd is providing the local project management team on behalf of the EPC Contractor, Sumitomo Corporation of Japan. This includes providing management services similar to that of the Kawerau Geothermal Power Project.





PROJECT MANAGEMENT PROFESSIONAL SERVICES LTD

The Practical Consultants

PO Box 180075, Royal Heights,
Auckland 0656,
New Zealand
Ph/Fax +64 9 4167045
Mob +64 21 225 4316
ian@pmpservices.co.nz
www.pmpservices.co.nz

Past Projects

PMP Services Ltd is a young company that draws on the extensive experience of it's key personnel. Projects previously completed by our key personnel include the following:

- [Power Generation](#)
- [Oil & Gas](#)
- [Pulp & Paper](#)
- [Dairy, Food, Beverage & Industrial Refrigeration](#)
- [Chemical/ Process Industry](#)
- [Water & Wastewater Treatment](#)

Power Generation Projects

LMC-20 MW Geothermal Steamfield Ext., Lihir, PNG, 2005– 2006

Scope: EPC contract for the design, supply, installation & commissioning of a 20MW extension to an existing 30MW Geothermal Steamfield including 3 two phase production well connections, two phase pipeline, separation plant, steam main, scrubber, steam vents, brine and condensate flash tanks, controls and auxiliary equipment.



Role: Tender submission preparation, Technical Director for Robt. Stone & Co Ltd - Conceptual design, preliminary process design and mechanical design. Project Management of design process including detailed process design, civil, electrical and automation design. Co-ordination of procurement activities

Huntly e3p 400MW CCGT, Huntly, New Zealand, 2006 to 2007

Scope: EPC contract for the design, supply, installation & commissioning of a 400MW Combined Cycle Gas Turbine

Role: Mechanical Commissioning Engineer

Downer MBL - Synlait Dairy Factory Boiler Plant, 2005

Scope: EPC Contract for the design, supply, installation and commissioning of a Coal Fired Boiler Plant for the Synlait Dairy Factory.

Role: Tender submission preparation for Robt. Stone & Co Ltd.

Mitsui Babcock Energy Ltd - 2x300MW Downshot Coal Fired Boiler Phalai 2, Vietnam, 2004 to 2005

Scope: EPC contract for the installation & commissioning of 2x300MW Downshot Coal Fired Boiler.

Role: Warranty Engineer - Participate in daily meeting with the client and report on the status of the plant; Defects to be noted, checked and decide what needs to be done; Assist plant operation during start-up and shutdown; Assist maintenance activities .

LMC - 30 MW Geothermal Steamfield and Power Plant, Lihir Island, PNG, 2003 to 2005.

Scope: 30MW geothermal Steam field and power station for Lihir Gold Ltd on Lihir Island, Papua New Guinea. Project value was US\$55M and project completed in July 2005. A number of major contracts were coordinated together with a number of clients inputs (shipping, air travel, accommodation, concrete, earthmoving, crange, and transportation) resulting in significant challenges to achieve project budget and the completion date. Workforce was in excess of 200 personnel at the peak of construction. The EPCM team was based in Auckland (Mechanical), Cooma (Electrical) and Sydney (Civil). A project plan was developed, implemented and audited specifically for the project. Cost management was achieved using the Lihir Gold system. Management procedures were developed and successfully implemented to ensure continuity as all EPCM staff were on a fly in-fly out basis. The EPCM team generally comprised up to eight members until commissioning commenced

Role: Project Manager for Lihir Gold Ltd





PROJECT MANAGEMENT PROFESSIONAL SERVICES LTD

The Practical Consultants

PO Box 180075, Royal Heights,
Auckland 0656,
New Zealand
Ph/Fax +64 9 4167045
Mob +64 21 225 4316
ian@pmpservices.co.nz
www.pmpservices.co.nz

Power Generation Projects (continued)

LMC - 6 MW Geothermal Steamfield and Power Plant, Lihir Island, PNG, 2002 to 2003

Scope: 6 MW geothermal Steam field and power station for Lihir Gold Ltd on Lihir Island, Papua New Guinea. Project value US\$5M and project completed on time and to budget. Turbines were unused World War 2 General Electric made for destroyers supplied by Geothermal Development Associates, Reno, Nevada, USA.. Steamfield was completed on design build contract by Century Resources, New Zealand. Balance of the work was undertaken using local contractors. A project management plan and safety plan were developed specifically for this project. All mechanical, electrical and civil aspects of the project were managed with the assistance of the Lihir Gold electrical engineer and (for a short period) a Mechanical Supervisor. Significant inputs from the client (accommodation, air travel ,shipping, crange, transportation) provided challenges in meeting target dates. A technical RFP for power plant was completed during this period and proposals were sought for power plant to generate a further 30MW of power using geothermal energy. This was then used to produce a comprehensive feasibility study for the power project

Role: Project Manager for Lihir Gold Ltd

Mitsui Babcock Energy Ltd. Vietnam 2x300 MW Downshot Coal Fired Boiler, 2000 to 2003

Scope: EPC contract for the installation & commissioning of 2x300MW Downshot Coal Fired Boiler

Role: Commissioning Engineer - Conduct mechanical running test; Hands on control room operation (DCS); Blowing activities; Flushing; ABB gas air preheaters seal clearance check (axial and radial) and installation; Maintenance and lubrication .

Mitsui Engineering & Shipbuilding Co., KSA Saline Water Conversion Corp. 470 MW Capacity, Kingdom of Saudi Arabia, 1998 TO 2000

Scope: EPC contract for the installation & commissioning of 470MW Power Plant

Role: Commissioning Supervisor - Conduct mechanical running test; Hands on control room operation (DCS); Blowing activities; Flushing; ABB gas air preheaters seal clearance check (axial and radial) and installation; Maintenance and lubrication .

National Power Company (NPC) / Philippine Geothermal Inc (PGI). - MakBan Geothermal Power Plant Turbine Governor Pressure Control, 1999.

Scope: Wrote procedures and conducted combined PGI-NPC field tests to evaluate the feasibility of implementing Turbine Governor Pressure control (i.e. controlling steam supply pressure by automatically adjusting generation load) at the MakBan Geothermal development. Wrote comprehensive report and suggested operational improvements to NPC's operation of the Power Plants.

Role: Technical Expert

Power Generation Projects (continued)

Philippine Geothermal Inc.-MakBan Geothermal Steamfield Upgrade Project, Development Strategy & Future Strategy Studies Laguna, Philippines, 1997 - 2000

Scope: The project included the upgrade of six steam separation Satellite Stations, three steam scrubbing Plant Stations and the installation of a new Steamfield Wide Control system. The project had an approximate value of \$US13M. Feasibility studies for future development of MakBan Steamfield.

Role: Refinement of scope and project economics. Development and management of overall construction program. Co-ordination of work being carried out by several project engineers on different component projects. Recommending annual budget requirements for Steamfield Upgrade Project. Documentation and presentation of project economics for each component project of the MakBan Steamfield Upgrade Project in order to obtain financial approvals on behalf of the client. Presentation of project economics, scope and technical aspects for each component project.

Conceptual and Preliminary Engineering of Steamfield Development Strategy Studies, to evaluate options for future development of the Steamfield beyond the Steamfield Upgrade Project. This study encompassed Reservoir Engineering, Steamfield Engineering and Power Plant Engineering.

Future Strategy Studies - Extension of Steamfield Development Strategy Studies, to evaluate options for additional steam mains and/or new Separation facilities for the future development of the Steamfield beyond the Steamfield Upgrade Project. These involved close co-ordination with the PGI reservoir department and Power Plant Rehabilitation group. Wrote procedures and conducted field testing to confirm/update assumptions used in Steamfield Upgrade Project Economics, Steamfield Development Strategies and Future Strategy Studies e.g. vessel efficiency tests, existing vessel pressure drop measurements, Steamfield deliverability characteristics.

National Power Company/Philippine Geothermal Inc, Tiwi Development, 1997.

Scope: Conceptual and preliminary design of various steamfield and power plant upgrade projects including:

- Tiwi Geothermal Power Plant Power Plant Condensate Disposal Upgrade.
- Tiwi Geothermal Steamfield Southern Brine Injection Pump Station Relocation and Rehabilitation
- Tiwi Geothermal Steamfield MAT Ridge Separator and Brine disposal System Upgrade
- Tiwi Geothermal Steamfield Distributed Control system fiber optic cable installation Development, documentation and presentation of project economics in order to obtain financial approvals on behalf of the client.

Role: Technical Expert and Consulting Project Manager

Rangipo Power Station - G5 and G6 hydro turbine - generator overhaul, 1996

Scope: Refurbishment of G5 and G6 hydro turbine - generators at Rangipo Hydro Power Station to repair volcanic ash damage to the turbines which occurred due to contamination of water ways during the Mt Ruapehu volcanic eruptions. Several specialist materials, hard coatings, etc were trailed on replacement turbine parts to withstand the highly abrasive sediment loaded waters.

Role: Tender Submission and Project Management

Poihipi Road Geothermal Development - Geothermal Well Drilling Contract, 1996

Scope: \$11m Geothermal well drilling project at Poihipi Road geothermal development, Wairakei

Role: Project Management



PROJECT MANAGEMENT PROFESSIONAL SERVICES LTD

The Practical Consultants

PO Box 180075, Royal Heights,
Auckland 0656,
New Zealand
Ph/Fax +64 9 4167045
Mob +64 21 225 4316
ian@pmpservices.co.nz
www.pmpservices.co.nz

Power Generation Projects (continued)

Existing Geothermal Developments in Bay of Plenty Area, NZ, 1992 - 1996

Scope: Design/build construction projects at Wairakei geothermal field, Ohaaki geothermal field and Kawerau geothermal field.

Role: Tender submission Preparation and Project Management

Tokaanu Power Station - G1, G3 and G4 hydro turbine/generator overhaul, 1995

Scope: Refurbishment of G1, G3 and G4 hydro turbine - generators at the Tokaanu Power Station.

Role: Tender Submission and Project Management

Rotokawa Geothermal Development, Phase 1, 1994

Scope: Feasibility study and preliminary design including optimisation study on the initial development. Preparation of proposal for design and construction of first phase development.

Role: Preparation of Feasibility Study and Tender Proposal

Mokai Geothermal Development, Phase 1, 1993

Scope: Feasibility study and preliminary design including optimisation study on the initial development. Preparation of proposal for design and construction of first phase development.

Role: Preparation of Feasibility Study and Tender Proposal



PROJECT MANAGEMENT PROFESSIONAL SERVICES LTD

The Practical Consultants

PO Box 180075, Royal Heights,
Auckland 0656,
New Zealand
Ph/Fax +64 9 4167045
Mob +64 21 225 4316
ian@pmpservices.co.nz
www.pmpservices.co.nz

Oil & Gas Projects

Ongas Wiri—LPG Filling and distribution centre, 2005

Scope: Supply, installation and commissioning of a LPG Filling & Distribution center including all civil, mechanical, electrical & automation works.

Role: Tender submission preparation for Robt. Stone & Co Ltd

Origin - Kupe Gas Plant Mechanical Equipment and Piping Installation, Taranaki, 2005

Scope: Mechanical Erection of equipment and piping for Kupe Gas Plant

Role: Tender document scope and commercial review. Budget proposal preparation for Robt. Stone & Co Ltd

Origin - Kupe Gas Plant Onshore Pipeline, Taranaki, 2005

Scope: Supply and Installation of onshore pipeline for Kupe Gas Plant

Role: Budget proposal preparation for Robt. Stone & Co Ltd

Chiyoda, Snamprogetti & Co. Rasgas Train – 3 LNG Project Ras Laffan Industrial City, Qatar, 2003

Scope: EPC contract for the supply, installation & commissioning of Liquefied Natural Gas Plant 3

Role: Commissioning Supervisor

Sanko Engineering Corporation, Qatar Gas LNG Project, State of Qatar, 1996 to 1998

Scope: EPC contract for the supply, installation & commissioning of Liquefied Natural Gas Plant

Role: Piping Supervisor

Eleme Petrochemical Complex - Port Harcourt, Riverstate, Nigeria, 1993 to 1994

Scope: EPC contract for the supply, installation & commissioning of Petrochemical Plant

Role: Piping Supervisor



PROJECT MANAGEMENT PROFESSIONAL SERVICES LTD

The Practical Consultants

PO Box 180075, Royal Heights,
Auckland 0656,
New Zealand
Ph/Fax +64 9 4167045
Mob +64 21 225 4316
ian@pmpservices.co.nz
www.pmpservices.co.nz

Oil & Gas Projects

Advanced Technology Construction CO. Ltd. KSA Sharq Petrochemical Plant Expansion Project, Kingdom of Saudi Arabia, 1992 to 1993

Scope: EPC contract for the supply, installation & commissioning of Petrochemical Plant

Role: Piping Supervisor



PROJECT MANAGEMENT PROFESSIONAL SERVICES LTD

The Practical Consultants

PO Box 180075, Royal Heights,
Auckland 0656,
New Zealand
Ph/Fax +64 9 4167045
Mob +64 21 225 4316
ian@pmpservices.co.nz
www.pmpservices.co.nz

Pulp & Paper Projects

Nelson Pine Industries - Log Soaking Plant, 2001

Scope: EPC Contract for the design, supply installation, automation and commissioning of log soaking plant prior to the debarking process at Nelson Pine Industries.

Role: Completion of contract variation negotiations.

Nelson Pine Industries - Medium Density Fiberboard Plant (MDF3), 1996

Scope: New Medium Density Fibre Board Plant (MDF3) at Newson Pine Industries

Role: Request for Tender document preparation including preparation of piping schedules and piping layouts for new NPI MDF3 production line.

Dairy, Food, Beverage & Industrial Refrigeration Projects

Downer MBL - Synlait Dairy Factory Boiler Plant, 2005

Scope: EPC Contract for the design, supply, installation and commissioning of a Coal Fired Boiler Plant for the Synlait Dairy Factory.

Role: Tender submission preparation for Robt. Stone & Co Ltd

Fonterra - 6 FMG Bulk Butter Packers, 2005

Scope: Supply, installation and commissioning of 6 FMG Bulk Butter Packers for Fonterra Te Awamutu and Fonterra Mor-rinsville sites.

Role: Contract review and preparation of tender, Project Director.

Fonterra Te Awamutu - Milk Powder Dryer A&B, 2005

Scope: Supply, installation and commissioning of 4.5 t/h and 9.5t/h skimmed milk powder dryers including dryer building, auxiliary equipment and wet process modifications (\$45M).

Role: Contract review and Proposal Leader for preparation of tender.

Fonterra Edendale - AMF Salt dosing Project, 2004

Scope: Open book EPC contract for design, supply, installation and commissioning of automated process plant for blending and packaging of salted Anhydrous Milk Fat (AMF) including salt hopper, dust collector, shear mixing, pumps, jacketed tanks, heat traced pipework, packaging pumps, sump pump and controls.

Role: Tender submission preparation, Project Management





PROJECT MANAGEMENT PROFESSIONAL SERVICES LTD
The Practical Consultants

PO Box 180075, Royal Heights,
Auckland 0656,
New Zealand
Ph/Fax +64 9 4167045
Mob +64 21 225 4316
ian@pmpservices.co.nz
www.pmpservices.co.nz

Dairy, Food, Beverage & Industrial Refrigeration Projects

Tatua Co-operative Dairy Company - NZCP7 Cream Pasteuriser Upgrade, 2004

Scope: Design-build project for upgrade of exist cream pasteuriser to meet new NZCP7 standard.

Role: Project Director

Fonterra Te Awamutu - NZCP7 AMF Pasteuriser Upgrade, 2004

Scope: Design-build project for upgrade of exist AMF pasteuriser to meet new NZCP7 standard

Role: Project Director

Vinamilk - Infant Milk Powder Production Plant, Vietnam, 2003 - 2004

Scope: EPC Contract for the design, supply, installation and commissioning of Powder Handling Equipment for a milk treatment and standardization plant, dryer and ribbon blender for the production of infant milk powder for Vinamilk, Vietnam

Role: Tender submission preparation and contract negotiation for turnkey project for entire plant including milk powder dryer, blending and storage facilities, Project Management of Powder Handling systems supply (\$NZ1.6M).

Fonterra Marlborough - NZCP7 Compliance Project, 2003

Scope: EPC project for upgrade of existing cheese milk pasteuriser to meet new NZCP7 standard.

Role: Contract review and preparation of tender, Project Director

Fonterra Te Awamutu - Phase 2 Butter Plant upgrade , 2003

Scope: Supply installation and commissioning of Fonterra Te Awamutu Phase 2 Butter Plant upgrade including Butter Maker mods, FMG Bulk Butter Packers, conveying and palletising systems (\$7M)

Role: Contract review and preparation of tender.

Fonterra Te Awamutu - Phase 1 Butter Plant upgrade , 2003

Scope: Supply installation and commissioning of Fonterra Te Awamutu Phase 1 Butter Plant upgrade including cream silos, manifolds and cream treatment plant (\$8M)

Role: Contract review and preparation of tender.



PROJECT MANAGEMENT PROFESSIONAL SERVICES LTD

The Practical Consultants

PO Box 180075, Royal Heights,
Auckland 0656,
New Zealand
Ph/Fax +64 9 4167045
Mob +64 21 225 4316
ian@pmpservices.co.nz
www.pmpservices.co.nz

Dairy, Food, Beverage & Industrial Refrigeration Projects

Dairy Technology Services - Ice Storm Farm Vat Product Development, 2001—
2002

Scope: Development and production of Ice Storm on farm milk cooling system including development of prototype unit, testing and analysis, specification of production units, negotiation of sub supplier and subcontractor contracts for the manufacture of components and management of manufacturing process

Role: Project Manager & Technical Lead.

Jack Links Snacks - Hybrid Ammonia/Glycol Refrigeration System, 2001 - 2002

Scope: EPC Contract for design, supply, installation and commissioning of a hybrid ammonia/glycol refrigeration system at beef jerky production plant (\$NZ1.1M).

Role: Contract drafting and negotiation, Project Management

Fonterra Te Awamutu - 20kg Pail AMF Packaging & Palletising Plant, 2001

Scope: EPC Contract for design, supply installation and commissioning of a 20kg pail anhydrous milk fat (AMF) packaging and palletising plant.

Role: Contract negotiation and project management of the completion of contract variations negotiations

Lion Breweries, New Market Auckland - Variable Flow Beer Flash Pasteurizer, 2001

Scope: Design, supply, installation and commissioning of a variable flow beer flash pasteuriser.

Role: Tender Submission Preparation, Project Management

Westland Co-operative Dairy Company - Chilled Water Plant, 2001

Scope: Supply, installation and commissioning of a chilled water plant.

Role: Tender Submission



PROJECT MANAGEMENT PROFESSIONAL SERVICES LTD

The Practical Consultants

PO Box 180075, Royal Heights,
Auckland 0656,
New Zealand
Ph/Fax +64 9 4167045
Mob +64 21 225 4316
ian@pmpservices.co.nz
www.pmpservices.co.nz

Chemical / Process Industry Projects

Industrial Research Limited - 250 litre glass reactor system, 2001

Scope: Supply and commissioning of a 250 litre glass reactor system for the production of pharmaceuticals at Industrial Research Limited.

Role: Project Management

Kemikara - 450 Litre Glass Crystallizer, 2001

Scope: Supply and commissioning of a 450 litre glass crystallizer to Kemikara for production of ingredients flavourings.

Role: Tender Submission

New Zealand Pharmaceuticals Limited - 250 Litre Glass Reactor System, 2001

Scope: Supply and commissioning of a 250 litre glass reactor system for the production of pharmaceuticals

Role: Tender Submission



PROJECT MANAGEMENT PROFESSIONAL SERVICES LTD

The Practical Consultants

PO Box 180075, Royal Heights,
Auckland 0656,
New Zealand
Ph/Fax +64 9 4167045
Mob +64 21 225 4316
ian@pmpservices.co.nz
www.pmpservices.co.nz

Water & Wastewater Treatment Projects

Watercare Services Ltd - Huia Village Water Treatment Plant Upgrade Mechanical and Electrical Works, 2005

Scope: Upgrade of existing Huia Village WTP to meet current Drinking water quality standards including the installation of a new Zenon membrane filtration plant, conversion of existing sand filter to GAC filter, new dosing and treated water pumps, installation of new cable ladders, cabling, MCC and distribution board, relocation of existing equipment including associated civil and electrical works

Role: Tender submission preparation, Project Director for Robt Stone & Co Ltd

Public Works Department, Fiji Waimanu Rising Main (Water Treatment), 2005

Scope: Construction of a 500mm nominal bore rising main (approximately 2.1km long) between the Upper Waimanu Pump Station and the Savura Creek surge tank. Construction of a 0.5ML balance tank and associated pipework near the existing Savura Creek surge tank.

Role: Tender submission preparation for Robt. Stone & Co Ltd

Waikato District Council, Whangamarino Water Treatment Plant Upgrade, 2005

Scope: Expansion and upgrade of Whangamarino Water Treatment Plant to meet the demands from the new corrections facility, growing demand in the surrounding districts and more stringent treated water quality requirements. This contract included the construction of the civil, mechanical, electrical and controls work associated with the upgrade of the water treatment plant.

Work involved the supply and installation of a new reinforced concrete clarifier, new reinforced concrete filters, UV disinfection plant, pump building and miscellaneous chemical dosing together with the associated electrical, controls, civil and mechanical works. Scope included PLC programming and screen configuration.

Role: Tender submission preparation for Robt. Stone & Co Ltd
